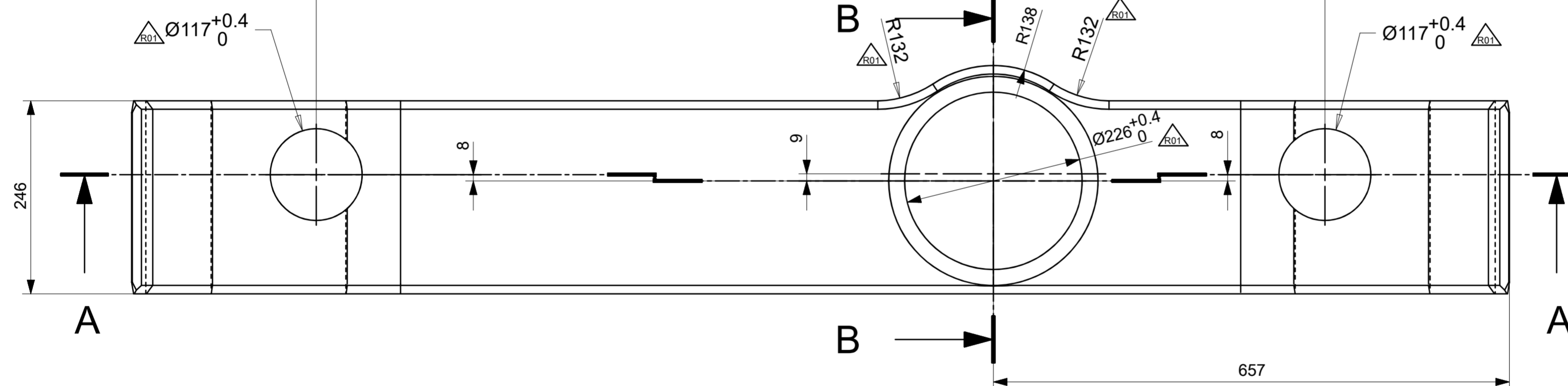
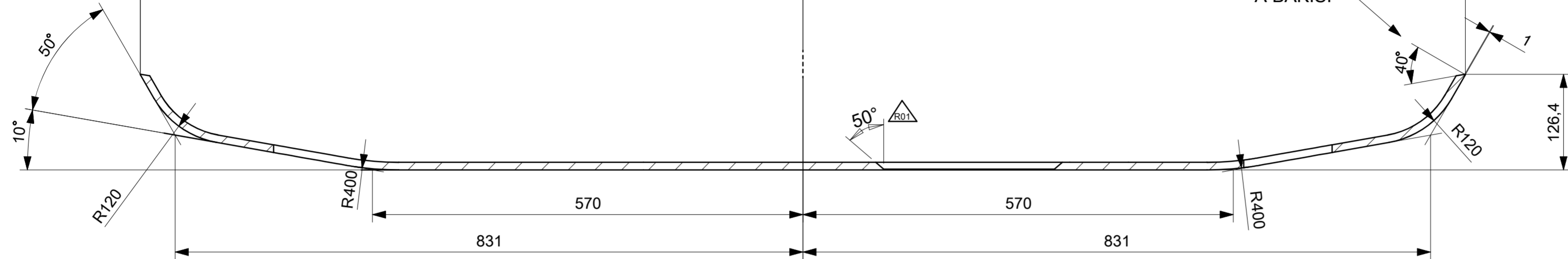


1754



Technical drawing of a mechanical part, likely a shaft or a component of a machine. The drawing shows a cross-section of the part, which is cylindrical. The dimensions are indicated by arrows and numbers:

- The total width of the part is 5.
- The thickness of the outer shell is 5.
- The inner diameter of the central hole is 15.
- The outer diameter of the part is 15.

ISO 13920 Welded Construction	ISO 2768 General Tolerances	ISO 12708 Steel Casting
<1000	6.0	0.8
<630	4.0	0.7
<400	3.0	0.6
<250	3.0	0.4
100	2.0	0.3
40	1.5	0.2
L mm	Ham	Is
Nom. Size	Class	
<4000	2.0	0.4
<2000	1.2	0.4
<1000	0.8	0.3
<400	0.5	0.3
30-120	0.3	0.2
2-30	0.2	0.1
L mm	m ±	K ±
Nom. Size	Class	
>20000	9.0	8.0
<20000	8.0	7.0
<16000	7.0	6.0
<12000	6.0	5.0
<8000	5.0	4.0
<4000	4.0	3.0
<2000	3.0	2.0
<1000	2.0	1.5
<400	1.0	1.0
30-120	1.0	0.5
2-30	1.0	0.5
L mm	A ±	E ±
Nom. Size	Class	



True length theoretically according to DIN 6935

STEEL SHEETS NOTES:

Thermal cutting - Classification of thermal cuts -
Geometrical product specification and quality tolerances
According to EN ISO 9013 - 231

Hot-rolled steel plates 3 mm thick or above -
Tolerances on dimensions and shape
According to EN10029 - B

Technical Specifications					
Technical Document					
Fixture/Mould Asset ID.					
Coating/Heat Tre./Roughness		R01	Resim güncellenmiştir.	16.07.2024	T.ŞAB.
Paint/Color		Modif. No	Modification Description	Date	Sign

				S355J2 EN 10025					34.2
Item No	Designation Name of Item	Qty.	Standard Identification No Company	Material Company Code	Dimension				Weight (Kg)
A	ISO 21920-1	ISO 8015	ISO 2553	General Tol.	ISO 2768	f <input type="checkbox"/>	m <input checked="" type="checkbox"/>	H <input type="checkbox"/>	K <input checked="" type="checkbox"/>
	EN 15085-2 Certification Level		CL1 <input type="checkbox"/> CL2 <input type="checkbox"/>	Weld Pro.	ISO 13920	A <input checked="" type="checkbox"/>	B <input type="checkbox"/>	E <input checked="" type="checkbox"/>	F <input type="checkbox"/>
			CL3 <input type="checkbox"/>	Cast Steel	TS 12708	Lm2 <input type="checkbox"/>	Lr2 <input type="checkbox"/>	Sm2 <input type="checkbox"/>	Sr2 <input type="checkbox"/>
	Approved	P.FARINA		Scale	<div> Turkish Railway Vehicles Industry Inc.</div>				
	Checked	M.BORLO		1 : 5					
	Prepared	E.PINTUS							
			Internal plate		EM20.24.03.60003				
Date:		Parts List No:		Sheet: 1/1		Size:A2	Rev:01		